

Human 1-chain tPA

Product Nos. ADG171 and ADG173

Description

Tissue Plasminogen Activator (tPA) is a protease of the S1 family (trypsin family) and is found in a wide variety of mammalian tissues, especially endothelial cells. tPA is secreted as a single chain precursor, which is cleaved to a two-chain form by plasmin. Both forms are catalytically active and have similar enzymatic properties in the presence of fibrin.

Preparation

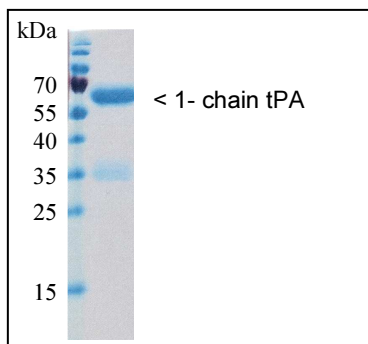
The 1-chain tPA is the secretion product of a Chinese Hamster Ovary cell line that had been transfected with the cDNA for human tPA obtained from a human melanoma cell line.

Molecular Weight

About 70 kDa (as determined on SDS-PAGE).

Purity

>95% 1-chain tPA (70 kD), <5% 2-chain tPA via SDS-PAGE analysis under reducing conditions.



Specific Activity

The specific activity is approximately 580,000 IU/mg.

Presentation

100 µg (ADG173) or 1 mg (ADG171) of sterile filtered single-chain recombinant tPA in a frozen solution of 34 mg/mL (3.4%) L-arginine, 10 mg/mL (1%) phosphoric acid.

Storage

Store frozen at -80°C. It is recommended to avoid freeze-thaw cycles.

Distributed by:

LOXO GMBH

IMMUNOLOGIE • MOLEKULARBIOLOGIE
BIOCHEMIE • PRODUKTE UND SYSTEME
69215 Dossenheim, Postfach 1130
Tel.: +49 6221 868023
Fax: +49 6221 8680255
E-Mail: info@loxo.de
Internet: www.loxo.de

Hinweis/Note:

Der Packungsbeileger dient nur als erste Information. Der relevante Packungsbeileger liegt der Ware bei.
The datasheet is for information purposes only. The current datasheet will be enclosed with product shipment.

For research use only!

ADG171+173©ADG07052019